

Experts to the Welding Industry

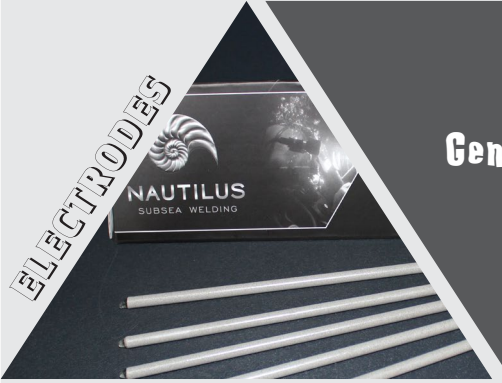


NAUTILUS

SUBSEA WELDING

"FLIP-UP" WELDING LENS VISOR

ELECTRODES



General

The **NAUTILUS "Flip-Up"** welding lens visor is the only visor you may ever need for welding and cutting operations!

Built from a robust industrial material polyformaldehyde (POM) to optimise and reduce maintenance. POM is a non-conductive engineering thermoplastic material with high stiffness, low friction, and excellent dimensional and thermo-resistance stability and behaviour.

This assembly, which fits all KM hats and helmets fully covers the faceplate, and so prevents any arc deflection bouncing back into the helmet. It is easy to use (even with thick gloves) to flip-up with just your thumb. A very clever press fit system allows for quick and easy fitting and holds the filter and any corrected lens securely. It's light and strong and is designed to be used with our **NAUTILUS Auto-Darkening** welding filter.

EQUIPMENT



Instructions

1. Remove* the two plug screws from the port retainer (keep them with you as you will use them as mount screws).
2. Fit the "L" Mount Bracket (P/N #7000-6) placing the shortest side on the port frame. Insert the two plug screws (through the "L" bracket) and tighten.
3. Insert the Flip-Up Welding Lens Visor (P/N #7000-1) in between the two "L" brackets. Adjust the centre hole of the Flip-Up with the two holes of the "L" brackets and insert the Setscrew stud (P/N #7000-2). While you are doing that, make sure that you place the Washers (P/N #7000-3) between the Flip-Up and the "L" brackets.
4. Insert on both sides the Split Washer (P/N #7000-4).
5. Insert and tighten the two Lock Nuts (P/N #7000-3) in a way that the welding visor can be flipped up and can support its own weight in the upper position.

TRAINING



Benefits

- Easy & Quick to Install
- Quick and easy to fit a shade filter
- Robust material / Low maintenance
- Easy to use even with thick gloves
- Enough space to fit corrective lenses

* Only competent person (in accordance to IMCA D018) following fitting instructions shall conduct products' installation

Fits Also Standard Shade Filters
ISO DIN 108mm x 51mm

CONSULTANCY



Quality

Innovation

Expertise

Training & Certification

To place an order contact our local partner or visit our website

Nautilus Subsea Welding

41 Propylaion Street, Rita Court 50
4th Floor, Flat 401, P.O.: 1048
Nicosia, CYPRUS
Registration No.: HE 401334
Tax Identification No.: 10401334

www.nautilussubseawelding.com

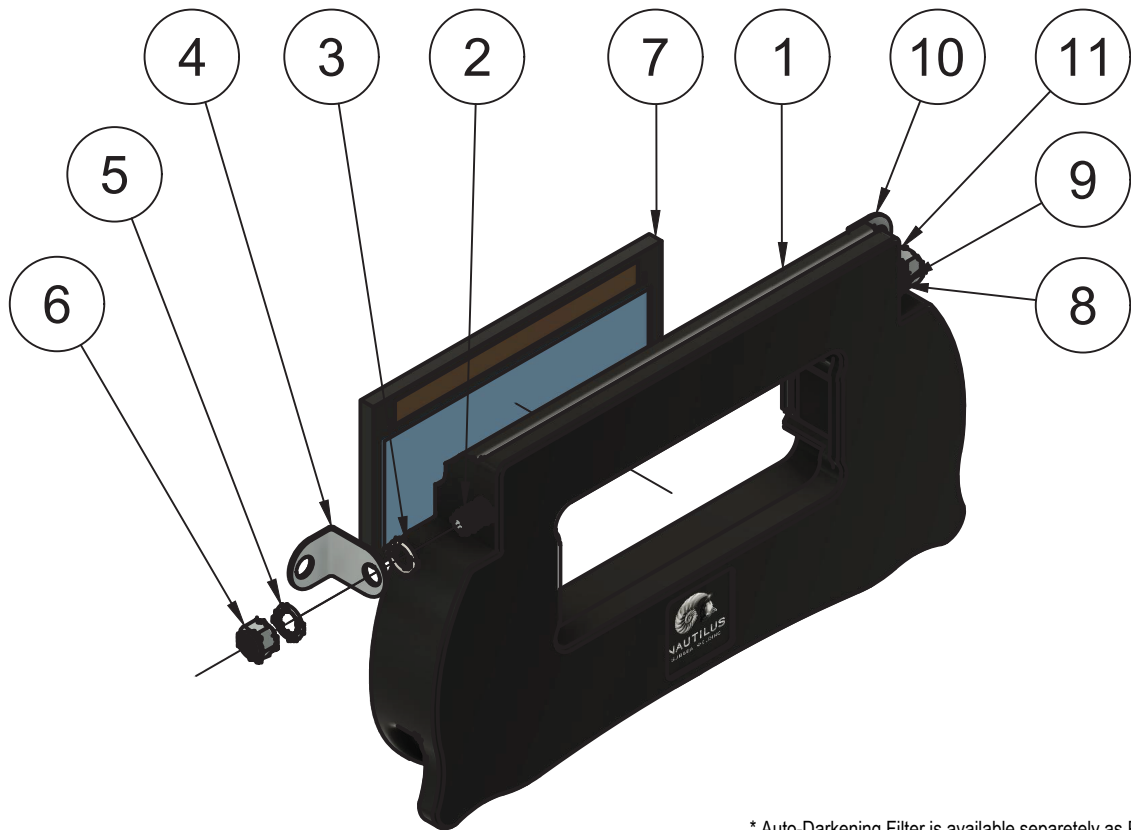

David J. Keats
+44 (0) 7974 931591
david.keats@nautilussubseawelding.com


George A. Maroudas
+30 6955 58 99 28
g.maroudas@nautilussubseawelding.com


Bart Cassiers
+31 6 53 59 17 17
bart.cassiers@nautilussubseawelding.com

Parts List

| Item | Qty | Part Number | Part Name | Description |
|------|-----|-------------|------------------------|--------------------|
| 1 | 1 | 7000-1 | Flip-Up | Welding Lens Visor |
| 2 | 1 | 7000-2 | Setscrew | M6 X 175 |
| 3 | 1 | 7000-5 | Washer (1) | D10-Right ** |
| 4 | 1 | 7000-6 | "L" Mount Bracket (1) | Right ** |
| 5 | 1 | 7000-4 | Split Washer | D10-Right** |
| 6 | 1 | 7000-3 | Lock Nut | M6-Right** |
| 7 | 1 | 7000-7 | Auto-Darkening Filter* | Real Color |
| 8 | 1 | 7000-5 | Washer | D10-Left** |
| 9 | 1 | 7000-4 | Split Washer (1) | D10-Left** |
| 10 | 1 | 7000-6 | "L" Mount Bracket | Left** |
| 11 | 1 | 7000-3 | Lock Nut (1) | M6-Left** |



* Auto-Darkening Filter is available separately as P/N 7000-7

** Diver's point of view



NAUTILUS
SUBSEA WELDING

| | | | |
|--|------------------------------|-------------------------------|--|
| MANUFACTURER: MAREX SUBSEA WELDS LTD | | DATE: 15/04/2020 | |
| OWNER: NAUTILUS SUBSEA WELDING LTD | | DOCUMENT STATUS: ACTIVE | |
| TITLE: PART # 7000 FLIP-UP WELDING VISOR | | DWG No.: MSSW-DWG-2020-001 | |
| REV.: 09 | DATE of ISSUE: 01/05/2020 | SHEET No: 1/1 | |